

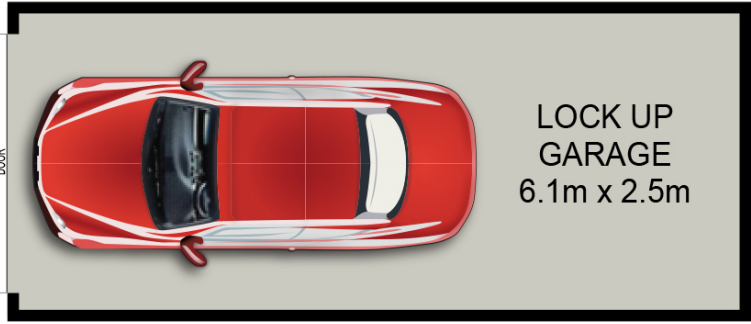
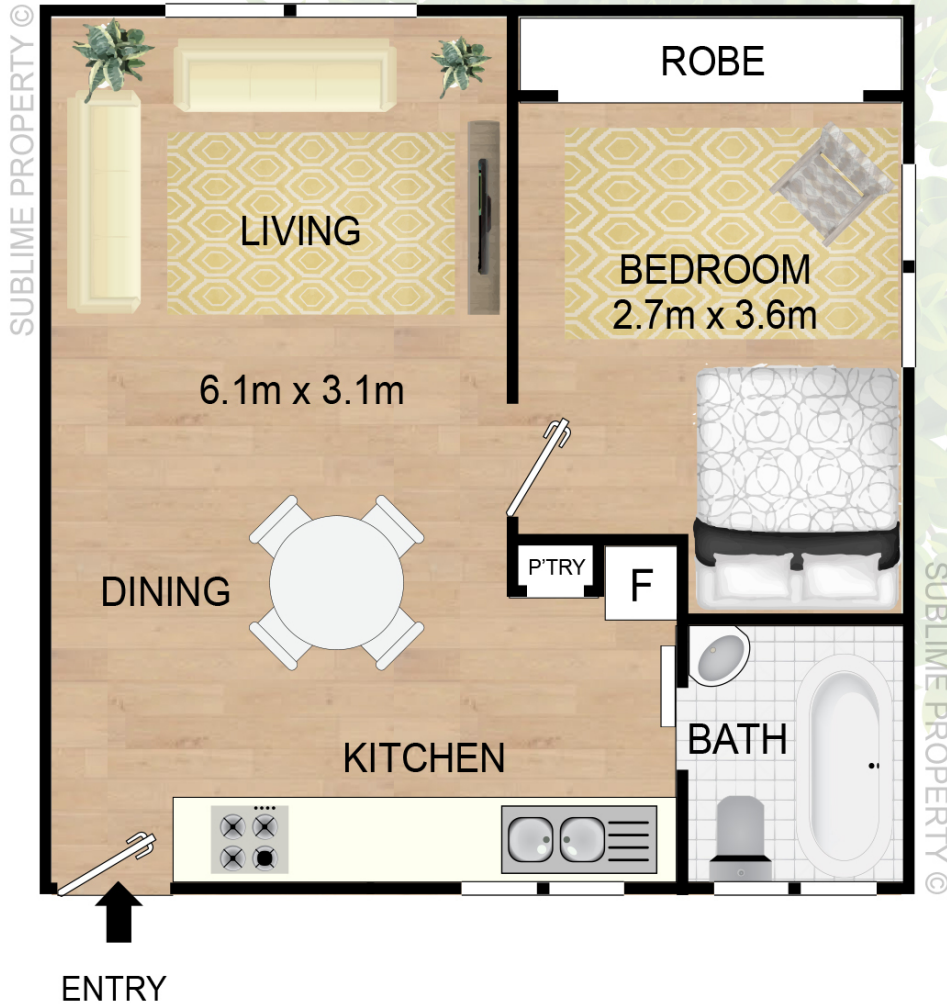
14/9 Trade Street NEWTOWN, NSW



SPACIOUS 1 BEDROOM APPARTMENT

This gorgeous light bright and airy apartment in a small block of only 16 is superbly located in a quiet wide tree-lined street close to your choice of Newtown or Stanmore stations. It is uniquely positioned within easy walking distance to either King Street, Newtown, Enmore Road, Enmore and Percival Road, Stanmore shopping strips. Plenty of excellent schools including Sydney University and many parks including Camperdown Park, O'Dea Reserve and George Smith Playground are close by. This delightful apartment features:

- 1 large bedroom with a built-in and a leafy outlook.
- A spacious open plan living, kitchen and dining space.
- Modern renovated kitchen with plenty of cupboard space.
- Stunning bathroom with feature bathtub and storage.
- Parquet floors and high ceilings.



All stated dimensions are approximate only. Particulars given are for general information and do not constitute any representation on the part of the vendor or agent.
COPYRIGHT © PROPERTY MARKETING AUSTRALIA PTY. LTD.

14/9 TRADE STREET

NEWTOWN