



613/221 Sydney Park Road ERSKINEVILLE, NSW

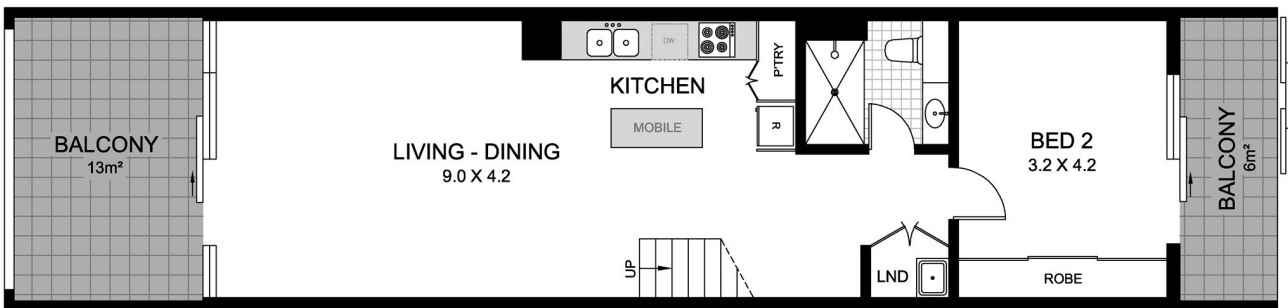
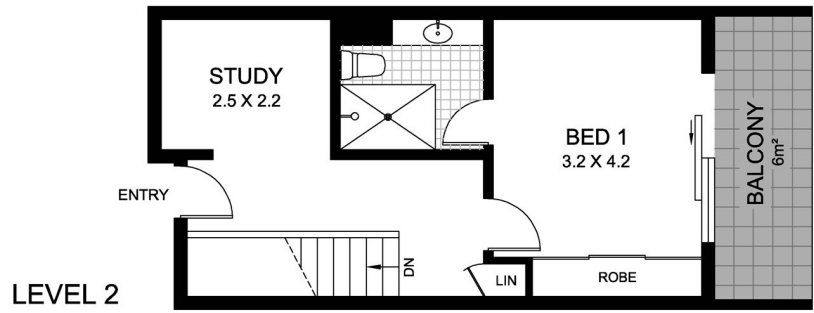
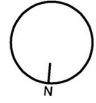
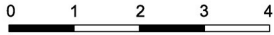


Split Level 2 Bed + Study + Pet Friendly Apartment In Iconic Zenix Complex

Located opposite Sydney Park's leafy recreational grounds and just footsteps to a smorgasbord of culture, this exquisite apartment offers a stylish renovation even the most fastidious tenant would appreciate.

Features include:

- 2 large bedrooms with their own balconies, air con, mirrored built-in robes.
- Master bedroom on separate level, features a lavish private ensuite.
- Secluded study area, oversized split-level apartment.
- Chic Caesarstone kitchen with island, huge pantry, adjoining bar nook.
- 5-burner gas stove, Fisher & Paykel dual dishwasher drawers & oven.



LEVEL 1

SECURITY
CARSPACE

