



8/14-18 Mary Street ST PETERS, NSW



3



2.5



2

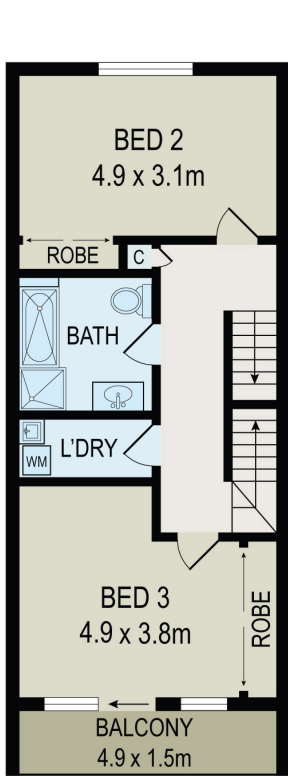
Stunning Unique 4 Level Terrace with Multiple Parking That's Too Good to Miss!

This warm, welcoming and beautifully presented home expanding over four levels will appeal to a broad range of buyers.

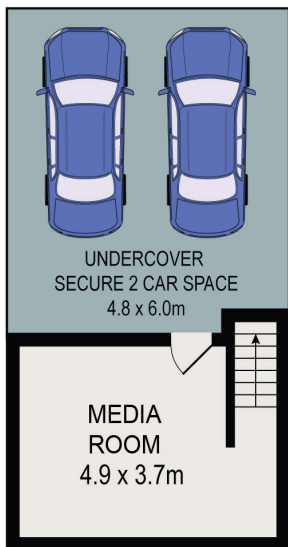
Home buyers will enjoy the versatile floor plan of the living and dining areas flowing seamlessly out to a sun drenched covered terrace, perfect for alfresco dining, further extending into a low maintenance garden with timber deck.

Investors will enjoy the low maintenance & high yielding rent achievable.

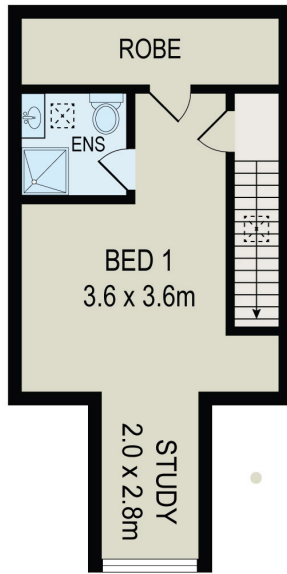
And the location is superb. Only 7km from the CBD you are close to everything including a short stroll away from local landmarks like Sydney Park, and on either end of Mary Street, the ever popular food, beverage, community and cultural centre at Precinct 75 and the new



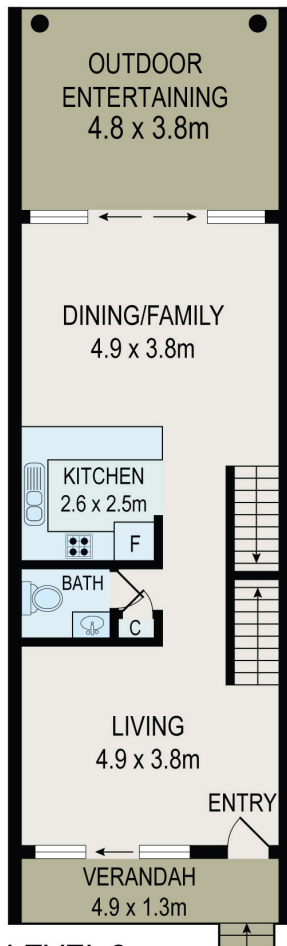
LEVEL 3



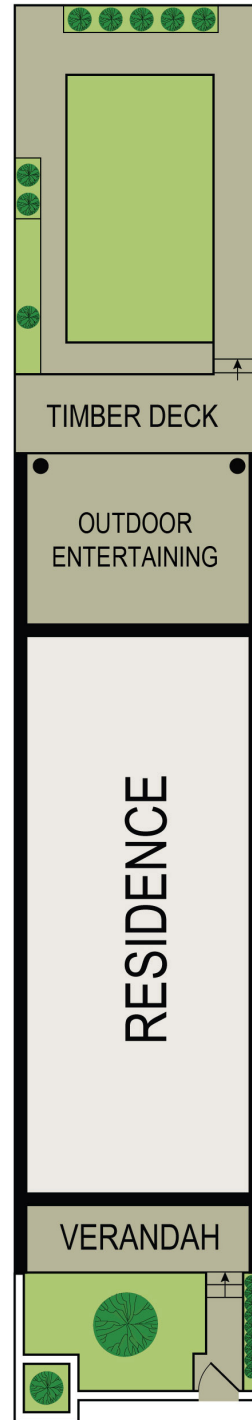
LEVEL 1



LEVEL 4



LEVEL 2



All information contained herein is gathered from all sources we believe to be reliable. However we cannot guarantee its accuracy and interested parties should rely on their own enquiries.

