



218/221 Sydney Park Road ERSKINEVILLE, NSW

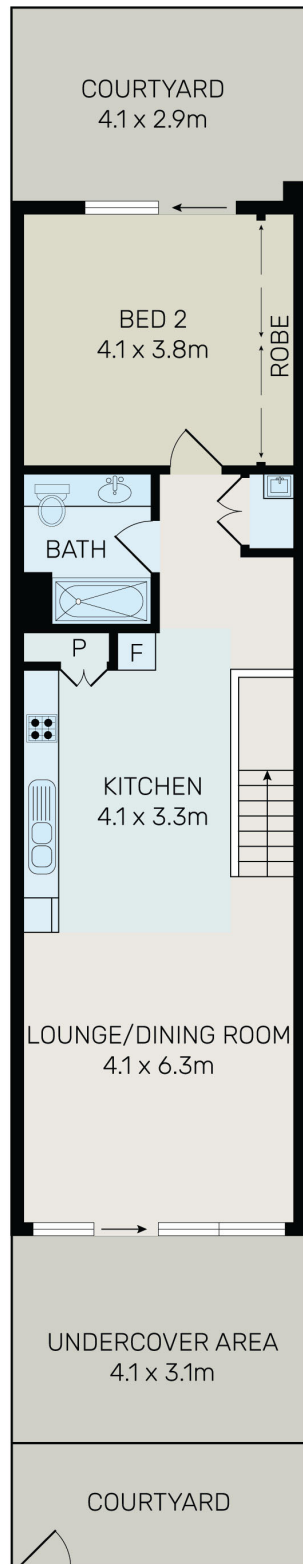
2 2 1

Split Level 2 Bed + Study Apartment in Iconic Zenix Building

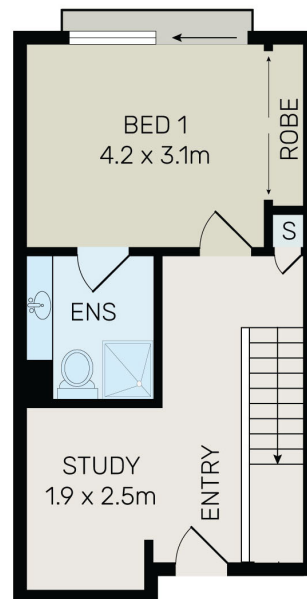
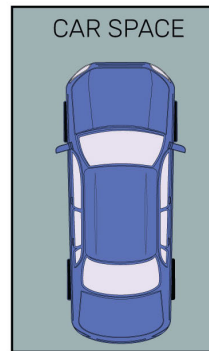
Located opposite Sydney Park's leafy recreational grounds and just footsteps to a smorgasbord of culture, this rare ground floor apartment presents villa-style living with the benefits offered by a renowned security complex which is beyond compare for city-fringe living.

Features include:

- Large living and dining area with floor to ceiling windows which open to generous ground floor courtyard ideal for entertaining.
- Modern kitchen with stone tops, quality stainless steel appliances including dishwasher & gas cook top.
- Modern bathroom with floor to ceiling tiles.



LOWER LEVEL



UPPER LEVEL



All information contained herein is gathered from all sources we believe to be reliable. However we cannot guarantee its accuracy and interested parties should rely on their own enquiries.



218/221 Sydney Park Road, Erskineville