

43 Crown Street ST PETERS, NSW



3



2.5



2

Modern huge Torrens title architect designed terrace in park side setting

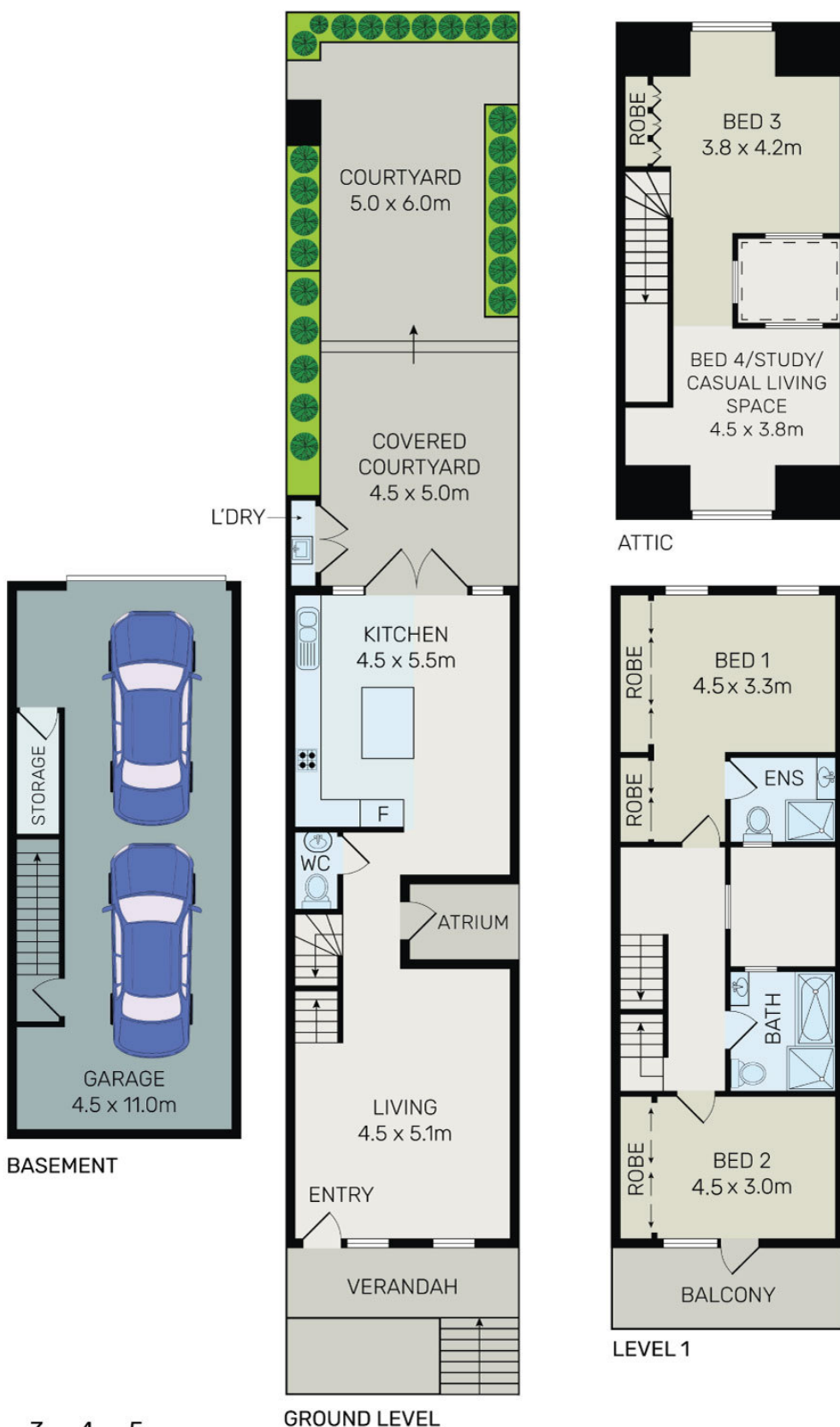
Desirably positioned in a quiet street just footsteps from Sydney Park, this tri-level terrace with basement double garage combines generous proportions, quality finishes and a key location for the ultimate city fringe lifestyle.

The home offers a functional and highly versatile layout, including a spacious loft-style retreat with integrated study, casual living space or potential 4th bedroom. It is perfect for growing families, complemented by an oversized courtyard with an entertainment area.

Beautifully presented with a flowing open design full of natural light

Council Rates: \$328.00 p/q

Water Rates: \$164.00 p/q



All information contained herein is gathered from all sources we believe to be reliable. However we cannot guarantee its accuracy and interested parties should rely on their own enquiries.



43 Crown Street, St Peters