

506/55 Princes Hwy ST PETERS, NSW



2



2



1

## Brand New 2 Bedroom + Parking Apartment in Bricklane Complex!

Brick Lane Apartments is St Peters newest and most exciting buildings that embody the quintessential Inner West living creative, cultured and a little bit quirky. Here, community spirit is alive and well, with residents embracing a design-conscious, sustainability-focused way of life. Award-winning architects Dickson Rothschild have designed a bold new address that perfectly reflects this urban sensibility, located directly opposite Sydney Park, Marrickville Metro, and St Peters train station.

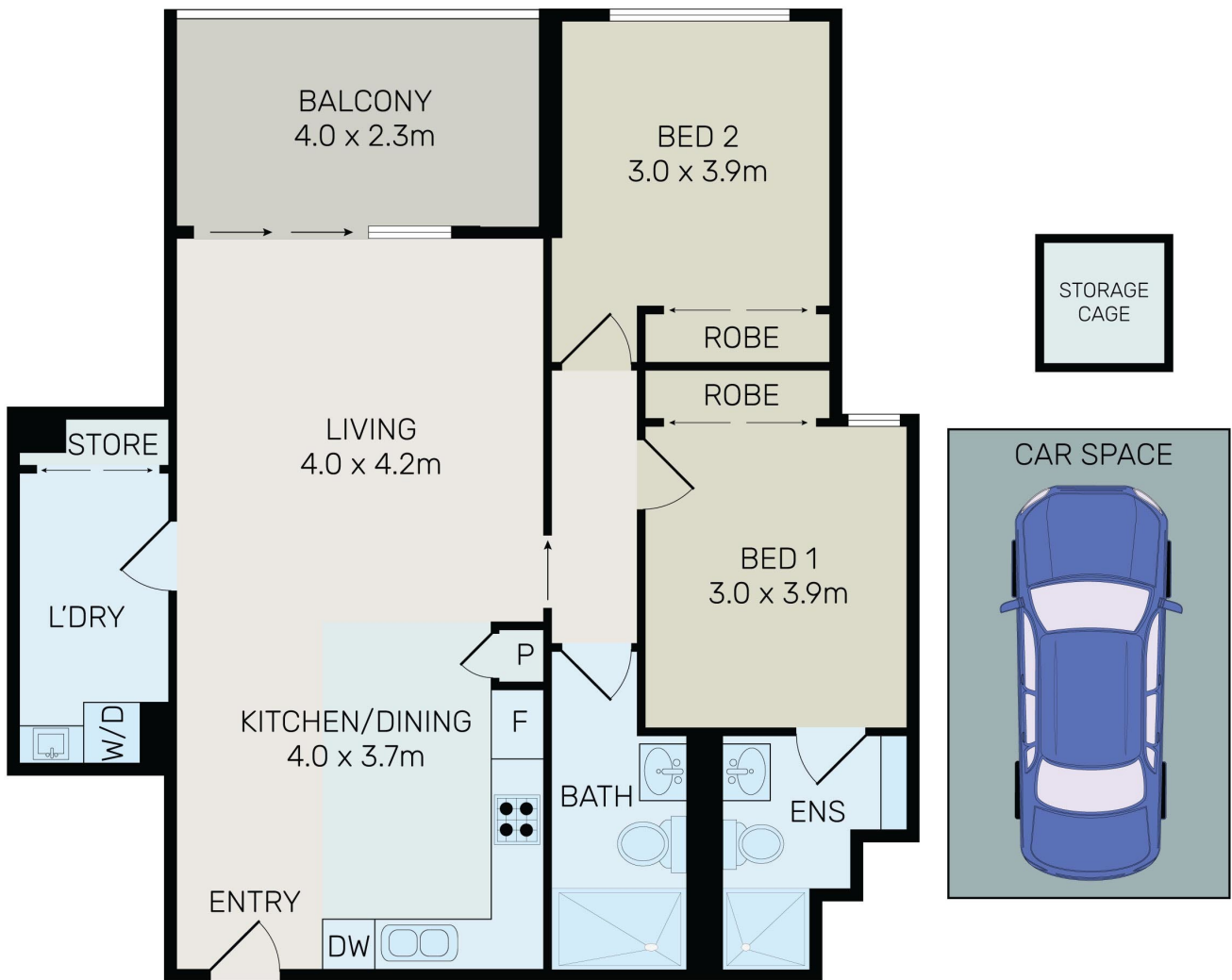
Features include:

- Oversized open-plan design flows over one spacious level.
- Generous bedrooms with ample storage, main with ensuite.
- Basement parking with separate storage cage.

**Council Rates:** \$221.00 p/q

**Water Rates:** \$185.25 p/q

**Strata Rates:** \$12,223.80 p/q



All information contained herein is gathered from all sources we believe to be reliable. However we cannot guarantee its accuracy and interested parties should rely on their own enquiries.

506/55 Princes Highway, St Peters