

6 Fanning Street TEMPE, NSW



3



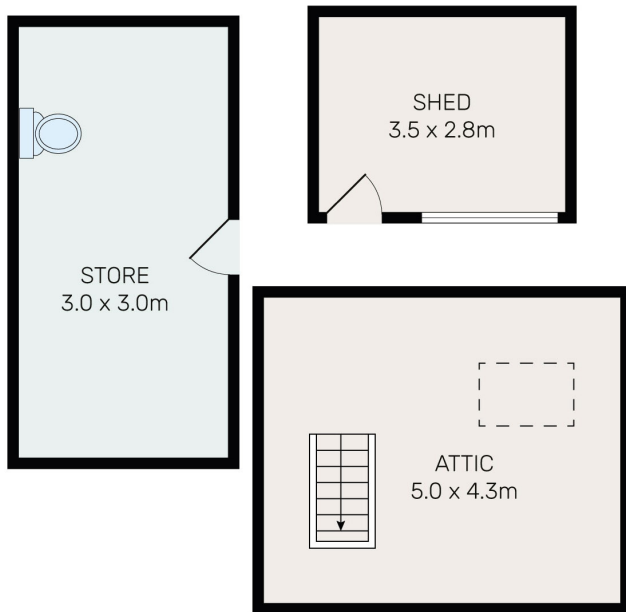
1

## Large 3 Bedroom Home with Potential in Peaceful Tempe Pocket

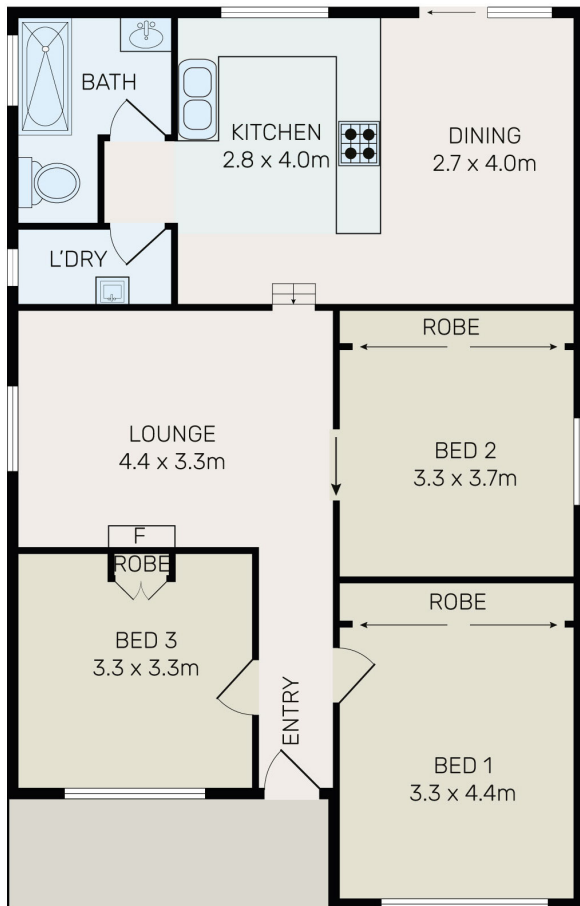
Perfect for the growing family, this spacious cottage is ready for those looking to move into a comfortable home in one of Tempe's best kept secrets. Displaying a generous contemporary layout, it provides a quality family retreat focused on low maintenance living on a generous 282sqm block. Located within easy reach of Tempe Train Station, schools and park lands make sure this property is at the top of your search list.

Features include:

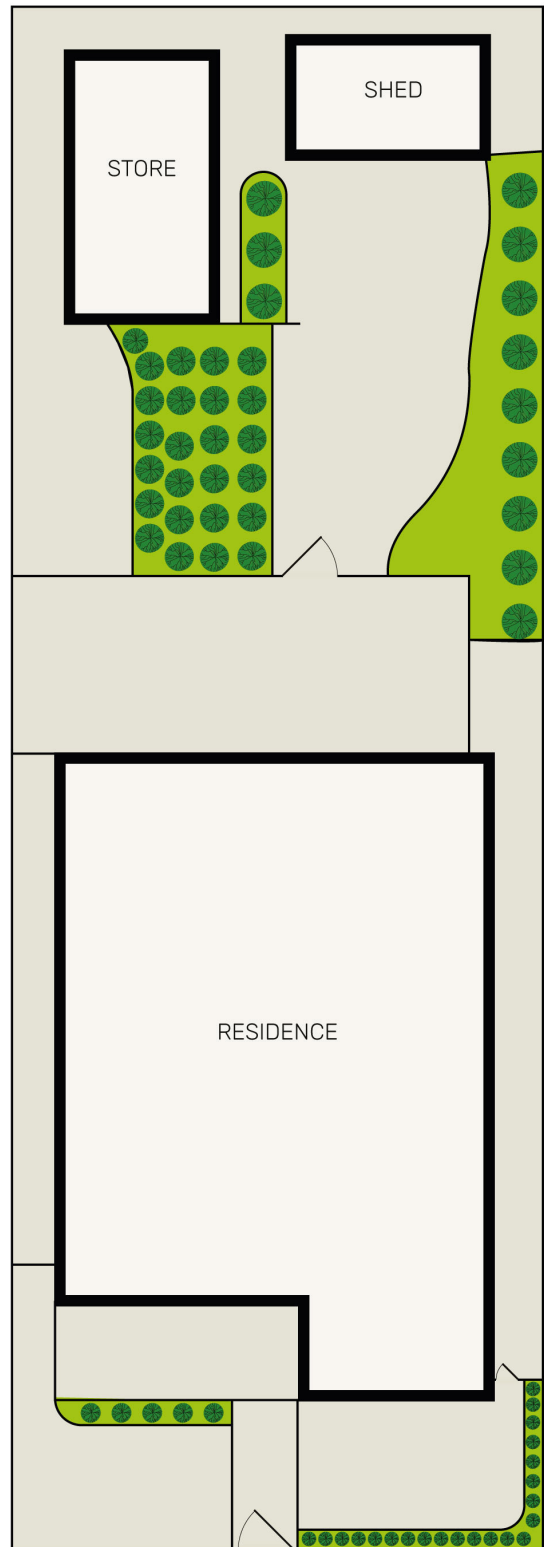
- Three double sized bedrooms with ample storage.
- Flexible floor plan with a separate lounge and dining area.
- Modern kitchen with Caesar Stone island bench and gourmet gas cooker.
- Large attic space ideal for storage.



ATTIC LEVEL



GROUND LEVEL



All information contained herein is gathered from all sources we believe to be reliable. However we cannot guarantee its accuracy and interested parties should rely on their own enquiries.



# 6 Fanning Street, Tempe