



7801/2 Cullen Close Glebe, NSW



1



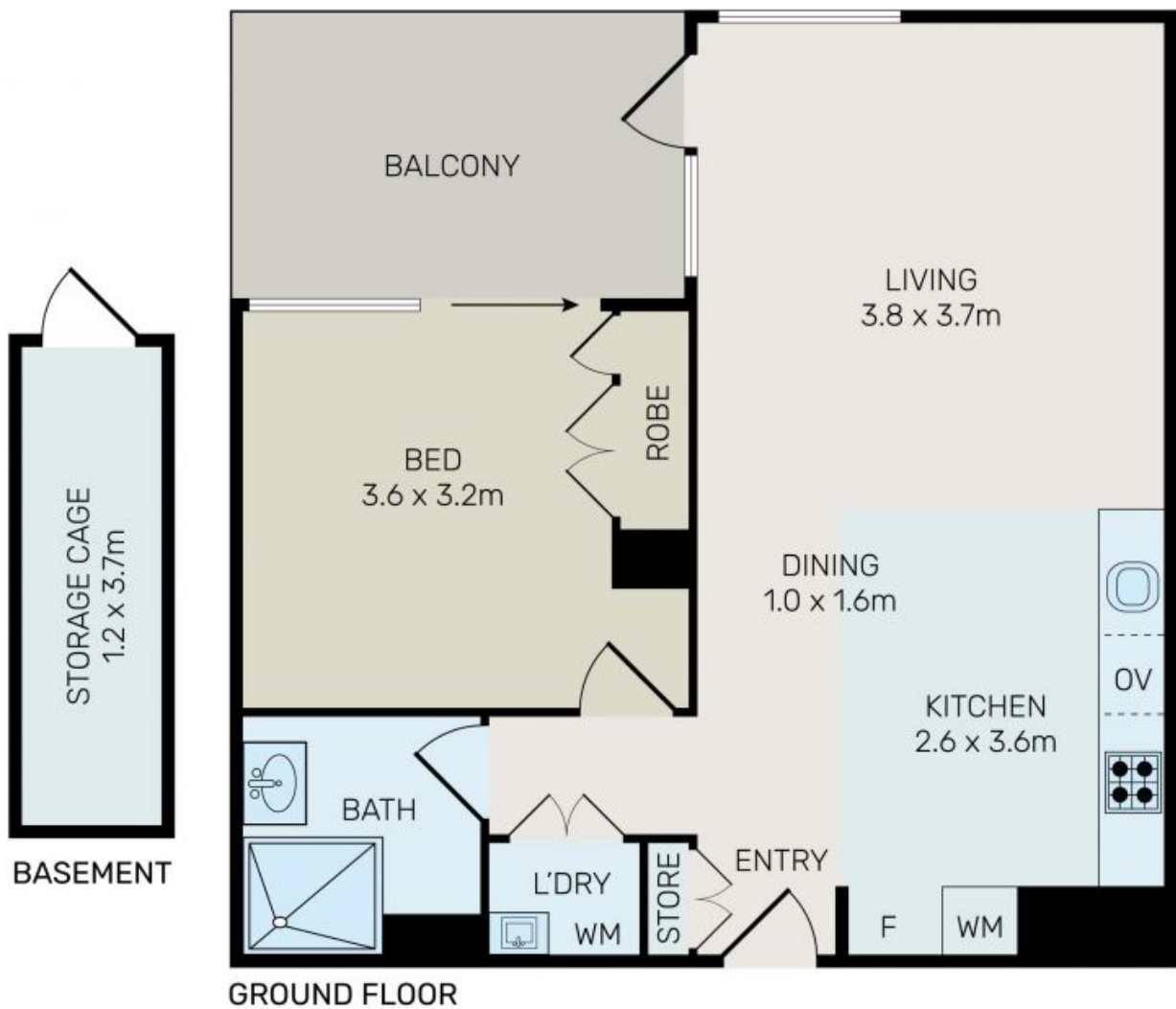
1

Near New 1 Bedroom Apartment In Maestro Building

This fabulous apartment located on the eighth floor of the Maestro building by Mirvac offers practical layout, quality finishes in a lifestyle prescient in Sydney's inner west.

Features include:

- Large open combined living and dining area.
- Spacious bedroom with built in wardrobe and balcony access.
- Caesar stone kitchen with high quality Miele Gas oven, microwave & dishwasher.
- Spacious entertainers balcony with South East aspect.
- Internal laundry with Fisher Paykel Dryer.
- Ducted air-conditioning throughout.
- Currently leased on an expired term.
- Easily accessible to buses, light rail, Tram sheds and local attractions including Broad



All information contained herein is gathered from all sources we believe to be reliable. However we cannot guarantee its accuracy and interested parties should rely on their own enquiries.



7801/2 Cullen Close, Forest Lodge