






**9-11 Leichhardt Street Glebe NSW**

4  3  3 

Showcasing quality, space and a superb contemporary design, this multi-level residence on 486sqm of land captivates with its striking architectural presence. It has been expertly crafted to provide a spacious sanctuary of exceptional style with its flowing proportions, relaxed entertainers' environment and whisper-quiet harbourside location that's walking distance to the waterfront, foreshore walks and Glebe Point Road's cafe scene.

Feature include:

- A clever design that enhances cross ventilation and natural light.
- A light-filled open plan layout with skylit living/dining areas.
- Showpiece island kitchen, high-end WOLF & Sub Zero

**Type** : House  
**Price** : \$3,300 per week  
**View** : <https://www.sublimeproperty.com.au/lease/nsw/inner-west/glebe/residential/house/7562988>

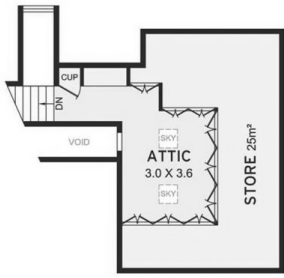


**Samuel Theo**  
0416 523 226

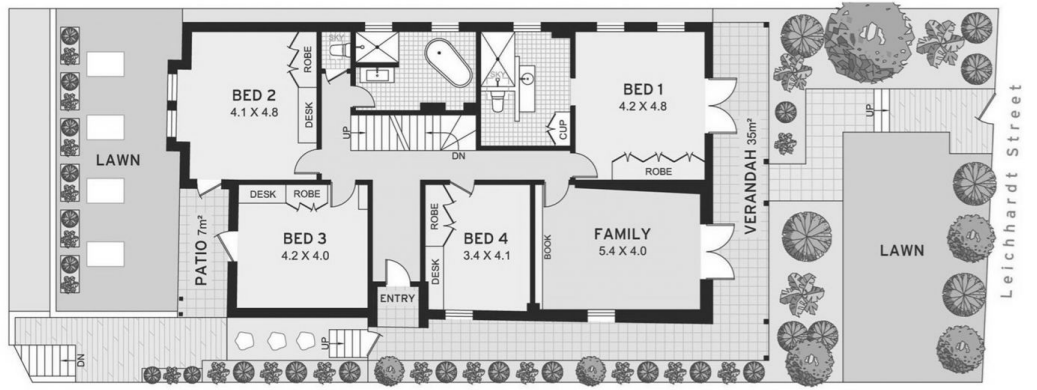


**Lawrence Rushton**  
0477 166 734

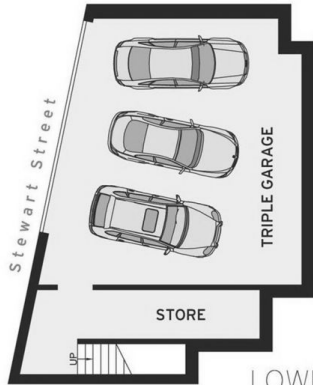
[For full version visit the website](https://www.sublimeproperty.com.au)



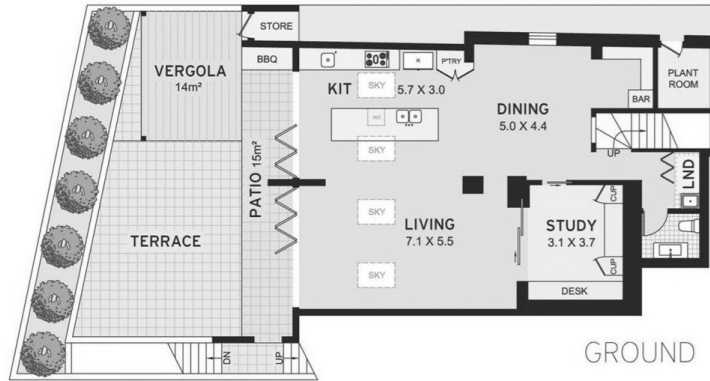
ATTIC



LEVEL ONE



LOWER GROUND



GROUND

APPROXIMATE AREAS

Internal Floorspace	255sqm
Garage Level	94sqm
Attic (Incl. store)	42sqm
Land Size	486sqm



**Glebe**  
9-11 Leichhardt Street

DISCLAIMER: This information has been prepared as a guide only.