

26/48-52 Darley Street Newtown, NSW



1



1



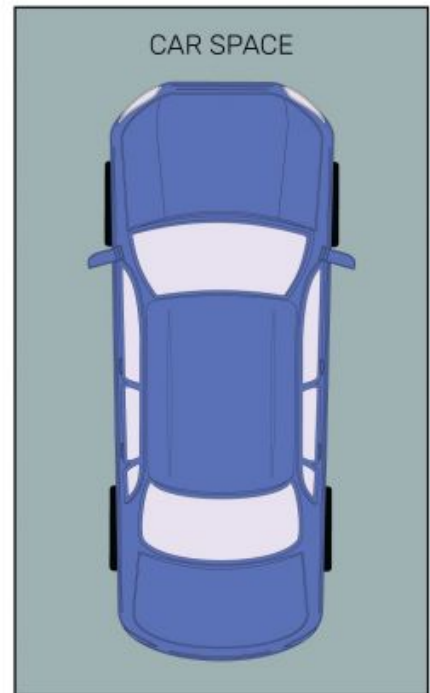
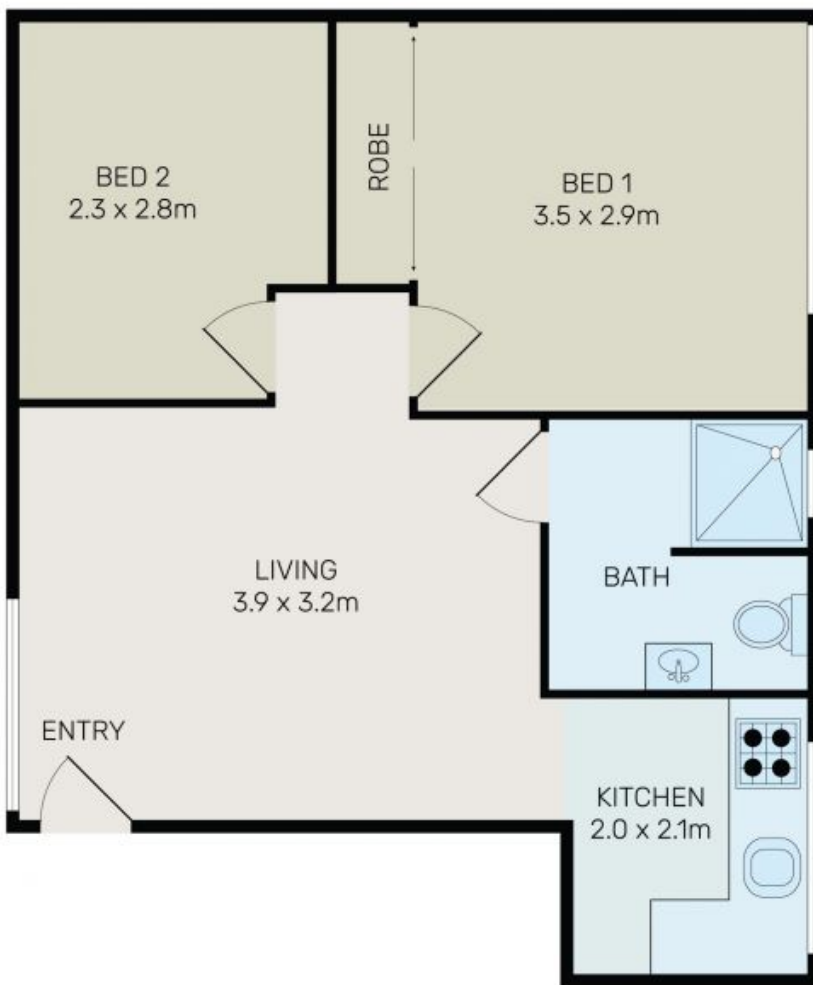
1

## Cute 1 Bed Apartment + Study or Small Second Bedroom

Centrally located on the edge of Newtown in a small block of 15 apartments, lies this attractive low maintenance one bedroom apartment. Located only moments to St Peters station and 400m to Sydney Park's wide open spaces, running tracks and nature trails. Ideal for first home buyers, investors or downsizers it's an amazing inner city pad close to all the action.

Features include:

- Large bedroom with built-in wardrobe.
- Spacious study that could be used as a small bedroom.
- Generous open plan living with leafy outlook.
- Modern kitchen with plenty of cupboard space.
- Stunning bathroom and storage.
- One-way street, moments to St Peters Station, 400m to Sydney Park and approximately 6km



All information contained herein is gathered from all sources we believe to be reliable. However we cannot guarantee its accuracy and interested parties should rely on their own enquiries.



**26/48-52 Darley Street, Newtown**