

17 Bridge Street Tempe, NSW



3



3



2

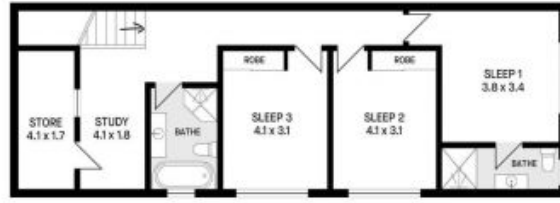
## Modern 3 Bedroom Home with Lush Parkland Views

Nestled in a quiet enclave in one of Tempe's most desirable streets lies this stylish duplex with off street parking. Boasting modern comfort, ample space, and abundant natural light it offers the perfect inner west lifestyle. Move straight in and enjoy the convenience of being located close to schools, park lands, public transport, local eateries and Ikea all within walking distance.

Features include:

- Solid timber floorboards and stylish finishes throughout.
- Spacious open living/dining flows to terrace.
- Caesarstone gas kitchen with breakfast bar.
- Large bedrooms with built ins, master with ensuite.
- Carport for 2 cars.

FLOORPLAN



First floor

INTERNAL 170m<sup>2</sup>  
LAND SIZE 279.8m<sup>2</sup>



Ground floor

SITEPLAN



NOT TO SCALE

Disclaimer: Information contained in this document are from sources we believe to be accurate however all interested persons should rely on their own enquiries. All dimensions are approximate.