



112 Terry Street Tempe, NSW



2



1



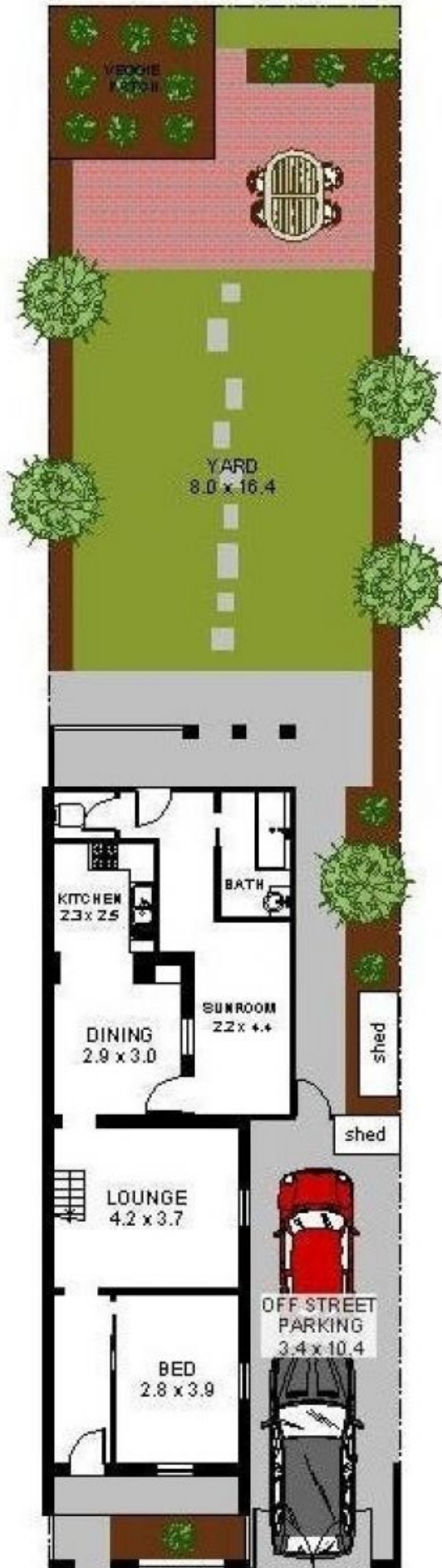
2

Charming Pet Friendly Home in Superb Location

Neatly presented while displaying original charm, this warm inviting home is within easy walking distance to Sydenham Station and moments from Tillman Park, schools, cafes and Marrickville Metro Shopping.

Features include:

- Two bedrooms - one on ground floor and one upstairs.
- Tidy kitchen adjacent to the dining area.
- Bathroom with separate toilet.
- Separate sun room.
- Wide tandem driveway for 2 cars.
- Large sunny rear grassed yard.
- Split system air conditioner.
- Pets friendly.



Total Site Area Approx. = 277.00 sq.m
 Total Internal Area Approx. = 95.38 sq.m
 Total Outdoor Area Approx. = 181.62 sq.m

112 Terry St TEMPE

