



186/221 Sydney Park Road Erskineville, NSW



1



1



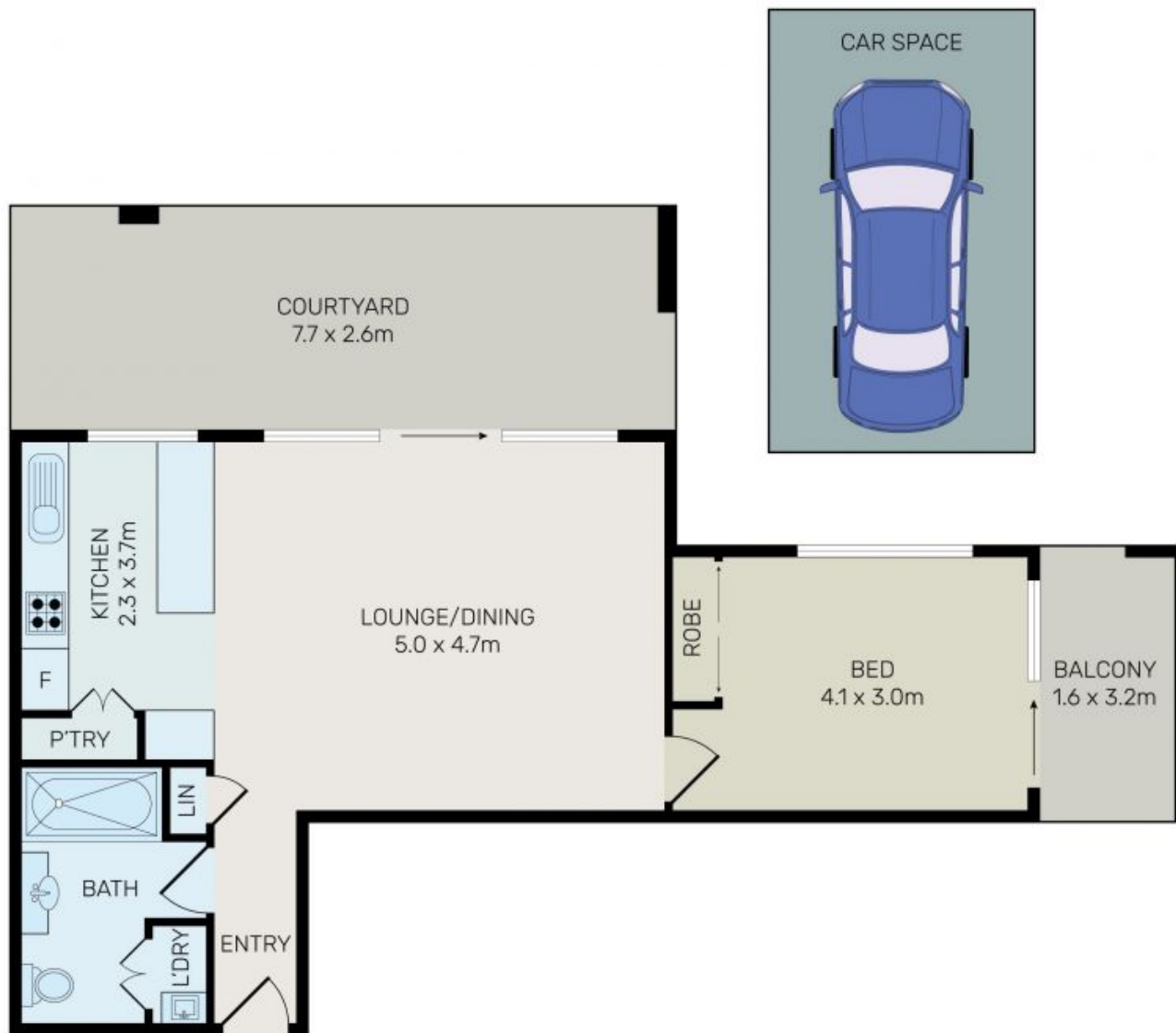
1

Rare Ground Floor 1 Bedroom Apartment with Parking

Located opposite Sydney Park's leafy recreational grounds and just footsteps to a smorgasbord of culture, this rare ground floor apartment offers the ultimate inner city lifestyle that offers a renowned security complex which is beyond compare for city-fringe living.

Features include:

- East facing courtyard opening out to lush, landscaped gardens.
- Clever and spacious floor plan with floor to ceiling windows.
- Gourmet kitchen comprising stone bench tops, stainless steel appliances and ample storage.
- Spacious bedroom includes mirrored built-in wardrobe.



0 1 2 3 4 5

All information contained herein is gathered from all sources we believe to be reliable. However we cannot guarantee its accuracy and interested parties should rely on their own enquiries.



186/221 Sydney Park Road, Erskineville