



115 Terry Street Tempe, NSW



2



1



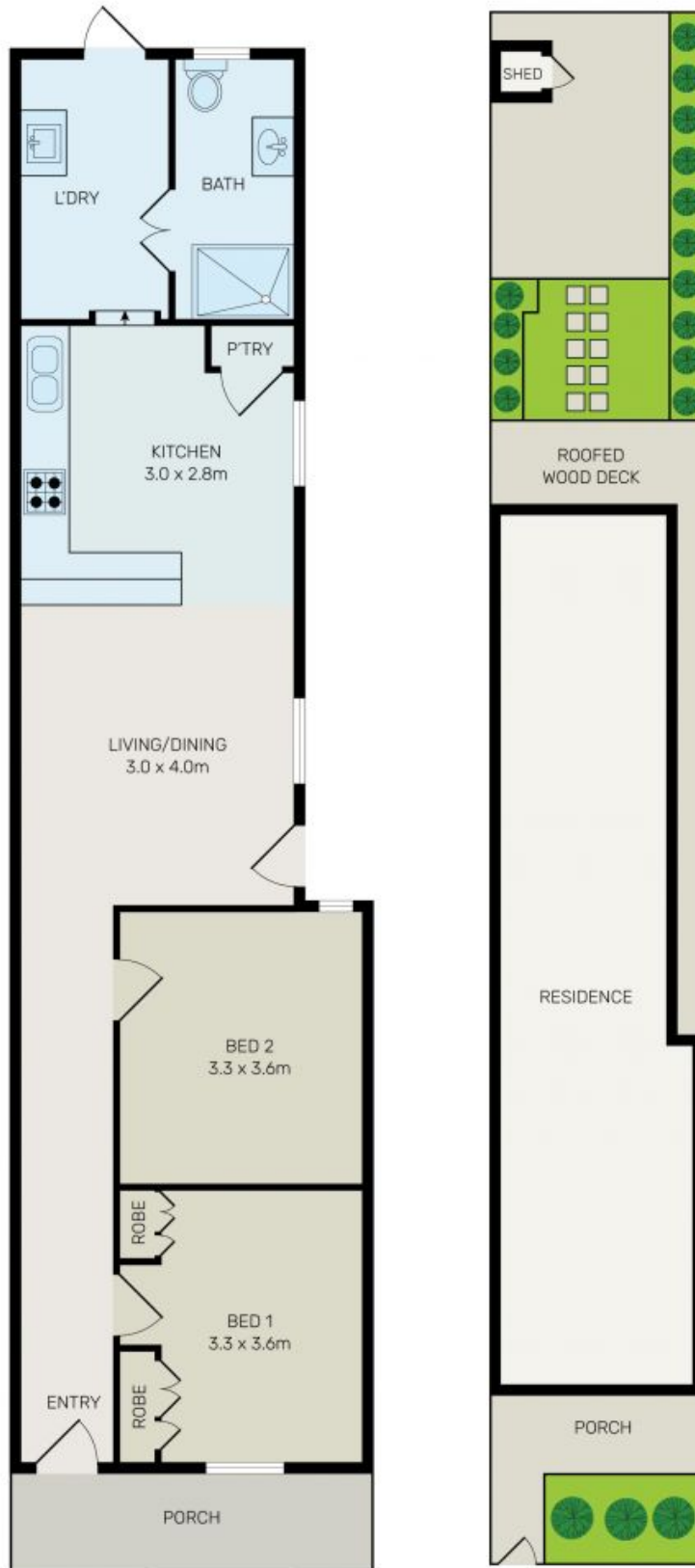
1

Nest or Invest - Stylish Single Level Terrace With Rear Lane Access

Located in a fantastic Inner West pocket lies this immaculate single level terrace. Having recently been refreshed throughout with clean contemporary details, it offers the ultimate enjoy-now lifestyle in a walk to everywhere location. From the rear lane parking to future development upside this property ticks all the boxes for the first home buyer or investor looking to capitalise on a great buy in a desirable locale.

Features include:

- 2x double bedrooms with ample storage and solid brick walls throughout.
- New contemporary kitchen and eat in area.
- High ceilings, ornate period detailing.
- Full-tiled bathroom and laundry area.



0 1 2 3 4 5

All information contained herein is gathered from all sources we believe to be reliable. However we cannot guarantee its accuracy and interested parties should rely on their own enquiries.



115 Terry Street, Tempe