



**227a Queen Street Beaconsfield NSW**

5 🛏 5 🚿 1 🚗

A true statement of impressive scale lies this three level triplex displaying clean modern finishes, free flowing design and a super modern kitchen fit for any master chef. With separate living and dining spaces, it's an adaptable home in a thriving urban precinct, so close to the area's best dining spots, an easy stroll to the Grounds of Alexandria, the rejuvenated Green Square project and an easy commute to the CBD.

Features include:

- Stunning contemporary new build with multi story layout.
- Separate living/dining spaces on the ground level with stunning polished concrete floors.
- High end finishes with beautiful kitchen, imported stone tops and stainless steel appliances.

**Type** : Terrace

**View** : <https://www.sublimeproperty.com.au/lease/nsw/inner-west/beaconsfield/residential/terrace/7929101>

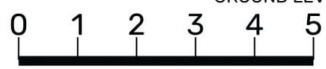
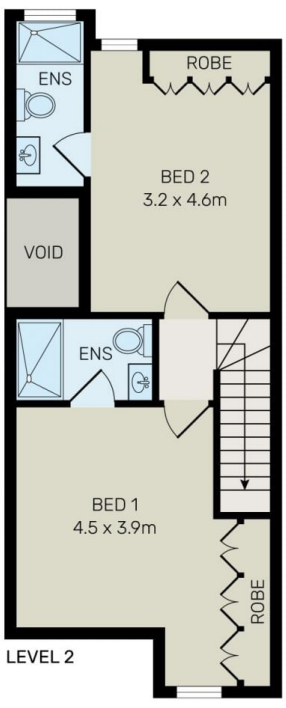
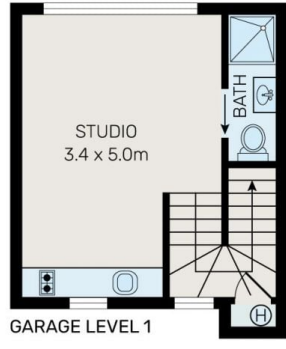
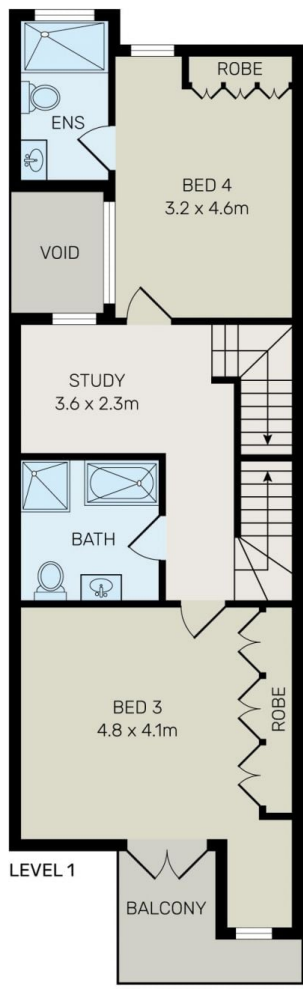
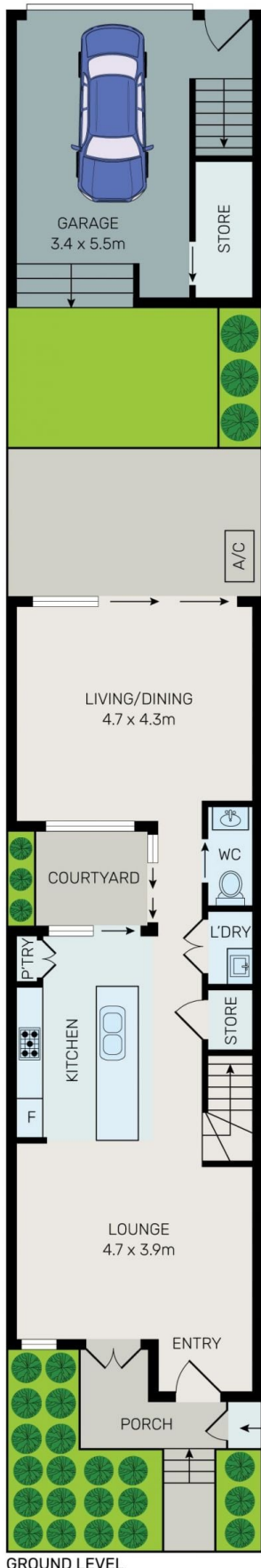


**Samuel Theo**  
0416 523 226



**Jovan Nena**  
0403 990 361

[For full version visit the website](https://www.sublimeproperty.com.au)



All information contained herein is gathered from all sources we believe to be reliable. However we cannot guarantee its accuracy and interested parties should rely on their own enquiries.



# 227 Queen Street, Beaconsfield