



48 Bridge Street Glebe NSW

3 2 2

Recently refurbished and ready for immediate occupation, this spacious corner terrace promotes an open-plan feel with ample light and well sized interiors. The lower level serves as a focal point, seamlessly connecting the outdoors making this terrace perfect for family gatherings and entertaining.

Features include:

- Classic veranda, Victorian street appeal.
- In/outdoor living with bi fold doors to low maintenance rear yard.
- Fresh kitchen with stainless steel appliances and ample storage.
- Large bedrooms with high ceilings and built-in wardrobes, master with ensuite and courtyard access.

Type : House

Price : \$1,450 per week

View : <https://www.sublimeproperty.com.au/lease/nsw/inner-west/glebe/residential/house/8682080>

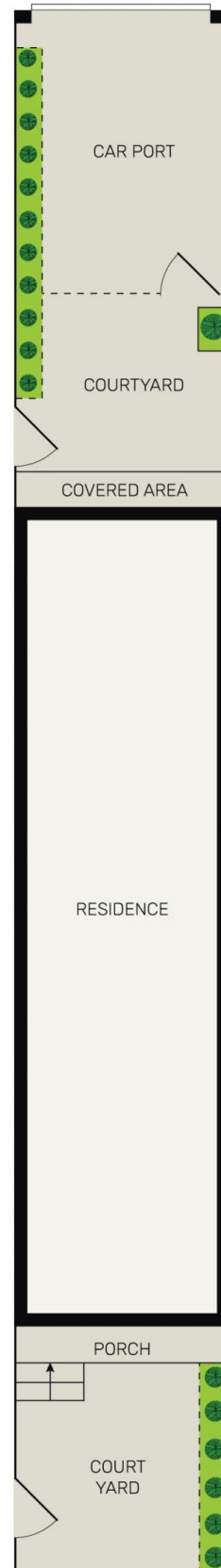
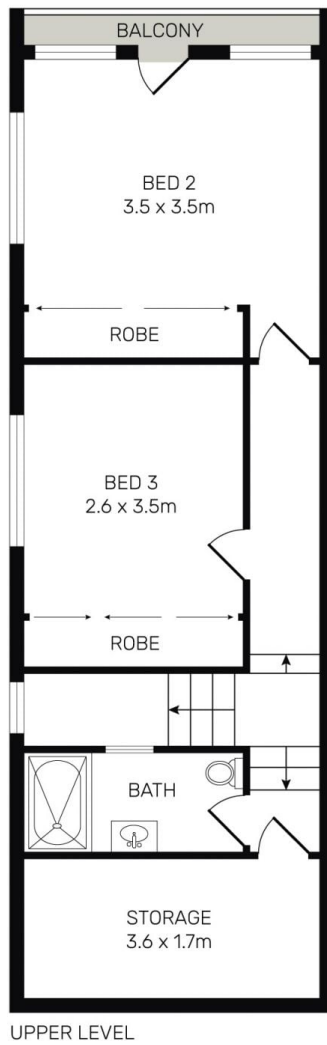
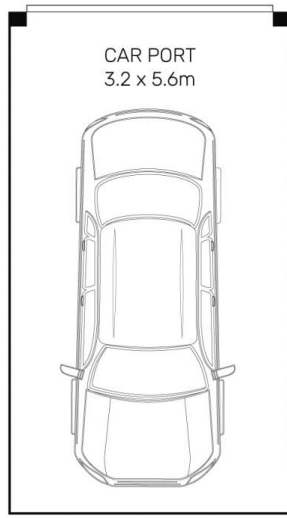
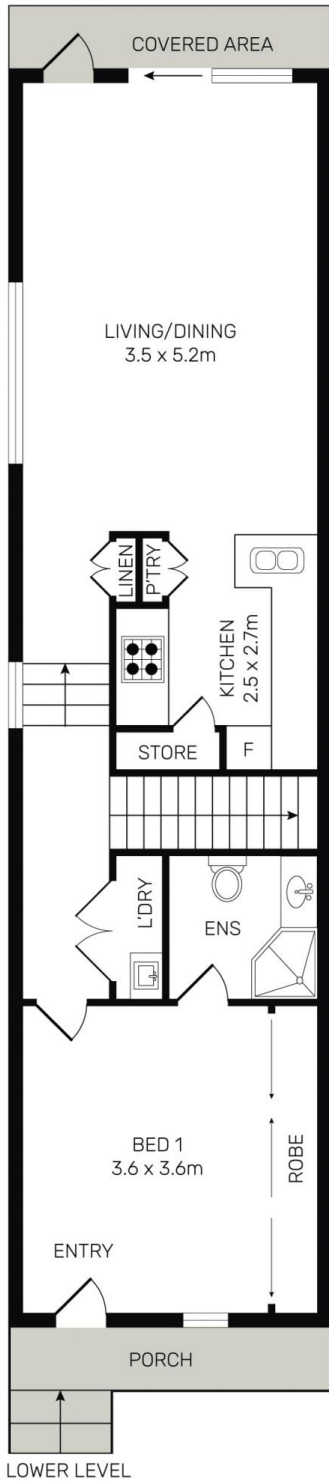


Lawrence Rushton
0477 166 734



Jovan Nena
0403 990 361

[For full version visit the website](https://www.sublimeproperty.com.au)



All information contained herein is gathered from all sources we believe to be reliable. However we cannot guarantee its accuracy and interested parties should rely on their own enquiries.



48 Bridge Road, Glebe