

6 Fanning Street Tempe NSW

3 1

Perfect for the growing family, this spacious cottage is ready for those looking to move into a fully renovated home in one of Tempe's best locations. Displaying a generous contemporary layout, it provides a quality family retreat focused on low maintenance living on a generous 282sqm block. Located within an easy 10 minute walk to Tempe Train Station, schools, Wollie Creek Shopping Centre and Cooks River park lands, make sure this property is at the top of your search list.

Features include:

- Three double sized bedrooms with oversized mirrored built in wardrobes and new ceiling fans in each room.
- Flexible floor plan with a separate lounge and dining area.
- Modern kitchen with gourmet gas cooker and dishwasher.

Type : House
Price : \$1,020 per week
View : <https://www.sublimeproperty.com.au/lease/nsw/inner-west/tempe/residential/house/8685208>

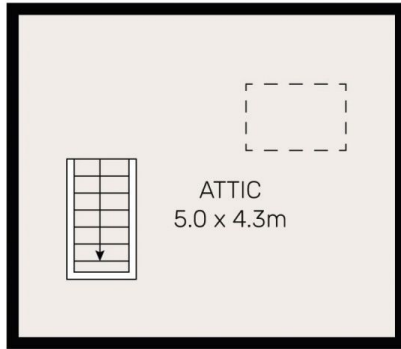


Lawrence Rushton
0477 166 734

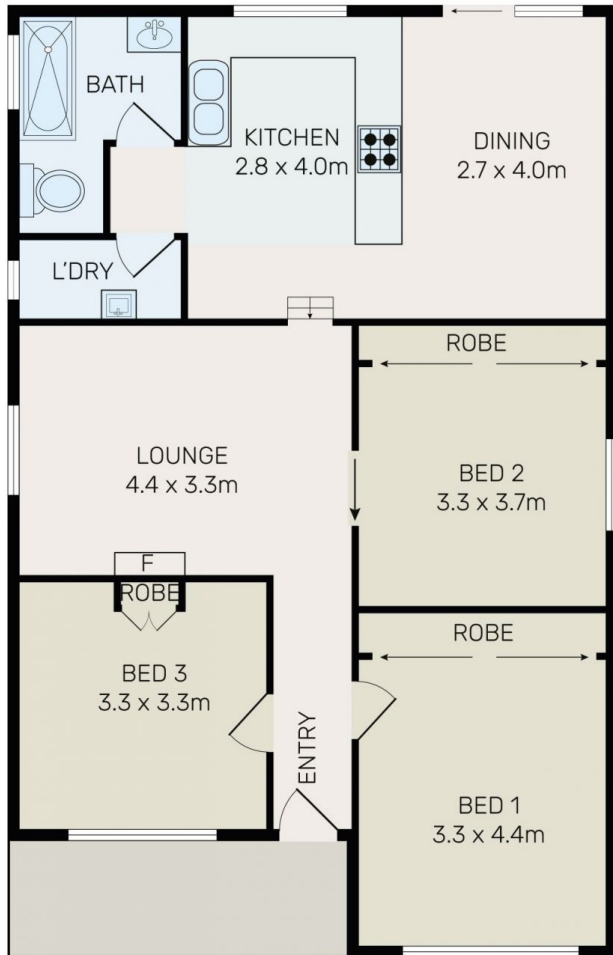


Jovan Nena
0403 990 361

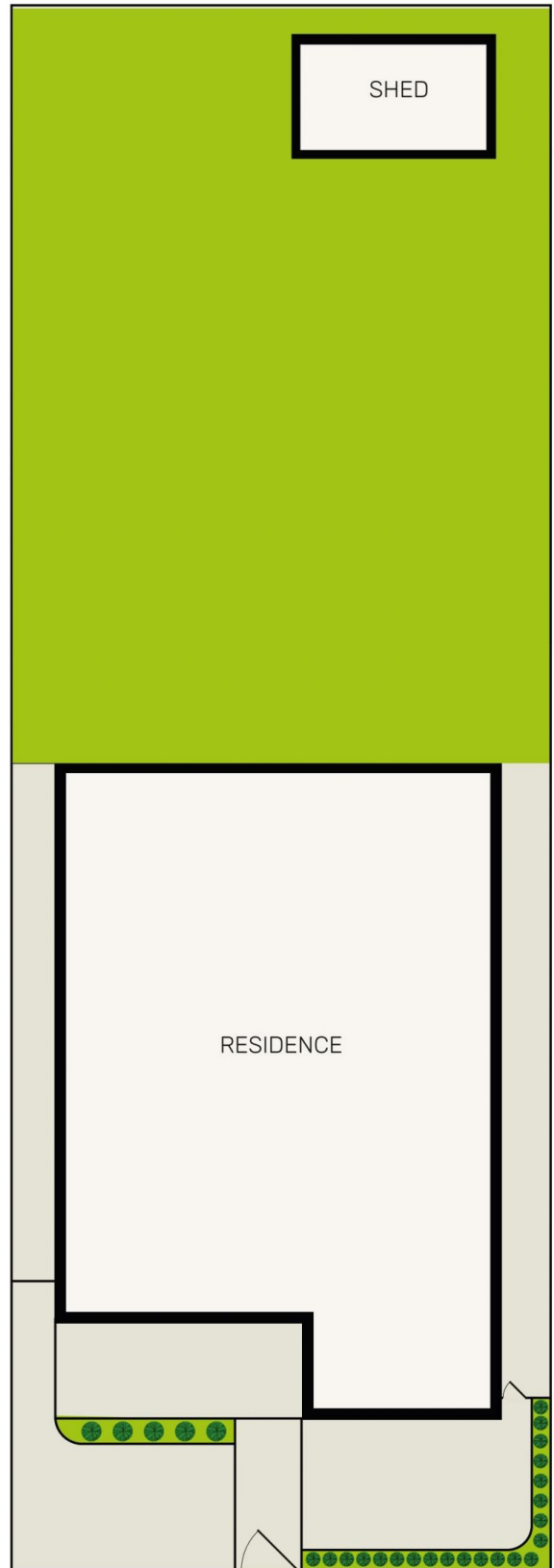
[For full version visit the website](https://www.sublimeproperty.com.au)



ATTIC LEVEL



GROUND LEVEL



All information contained herein is gathered from all sources we believe to be reliable. However we cannot guarantee its accuracy and interested parties should rely on their own enquiries.



6 Fanning Street, Tempe