



2 Nella Street Padstow NSW

3 2 2

Positioned in a sought-after pocket of Padstow, this versatile family home presents an outstanding opportunity for homeowners, investors, and developers alike. Set on a generous duplex potential site*, the property combines comfortable living with exciting future possibilities.

Inside, the home offers a light-filled open plan living and dining area, complemented by three well-sized bedrooms and a functional bathroom. Outdoors, enjoy the added convenience of a second bathroom, perfect for entertaining by the sparkling swimming pool or accommodating guests.

A standout feature is the expansive double-storey rumpus room, offering incredible flexibility to create a teenage retreat, home office, studio, gym, or potential garage

[For full version visit the website](https://www.sublimeproperty.com.au)

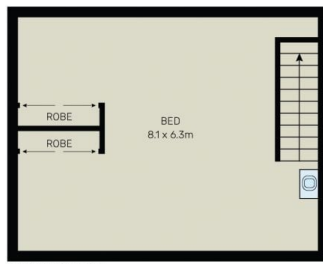
Type : House
Price : Auction
Land Size : 739 sqm
View : <https://www.sublimeproperty.com.au/sale/nsw/canterburybankstown/padstow/residential/house/8700054>



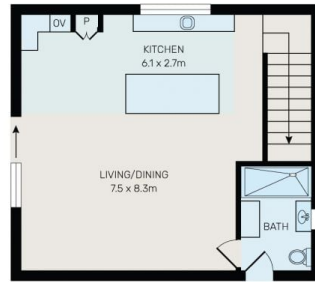
Samuel Theo
0416 523 226



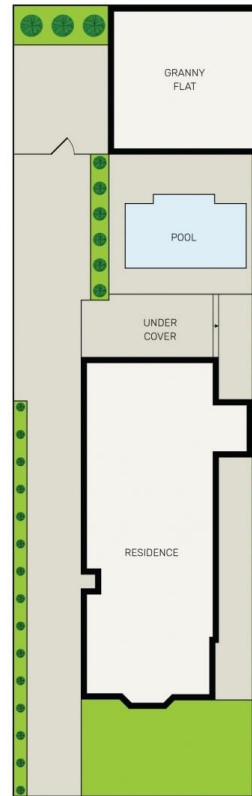
Maree Filippakis
0403 567 948



GRANNY TOP FLOOR



GRANNY GROUND FLOOR



All information contained herein is gathered from all sources we believe to be reliable. However we cannot guarantee its accuracy and interested parties should rely on their own enquiries.



2 Nella Street, Padstow